



MONTHLY MEMBERSHIP PROGRESS REPORT

District 410 C

Results as of: 02/28/2018

GMT: RASHMI KOOVERJEE

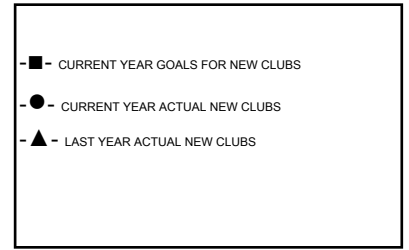
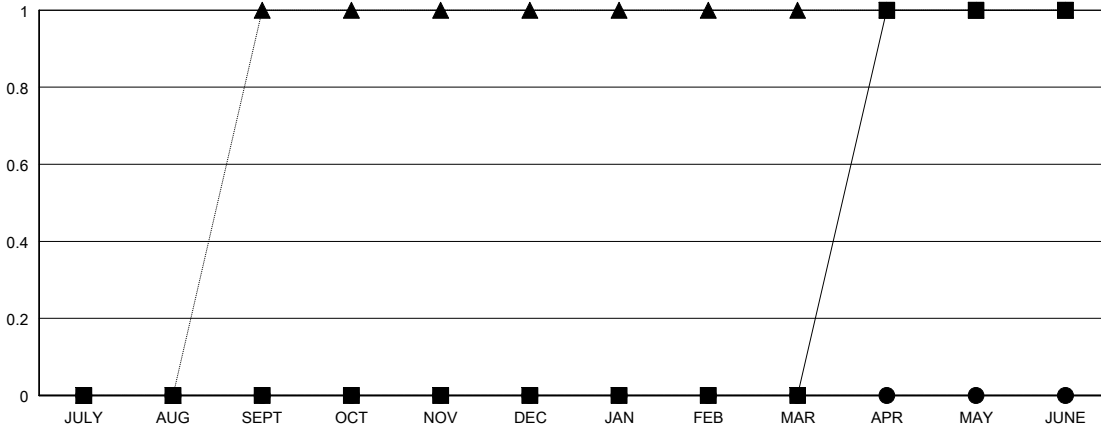
LOCATION REP OF SOUTH AFRICA

GMT CA

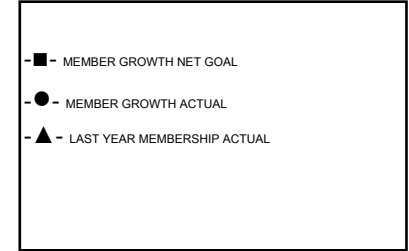
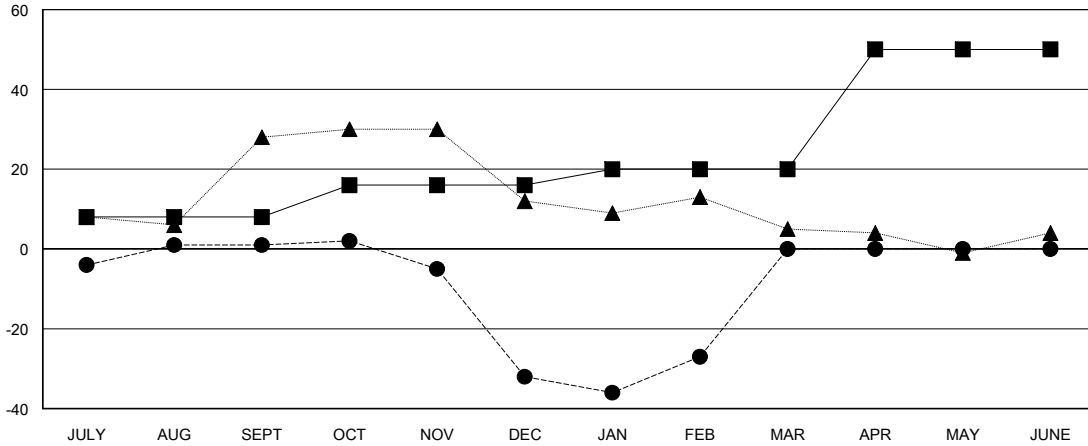
Clubs			
RESULTS FOR 2017-2018			
QUARTER	NEW CLUB GOAL	NEW CLUBS	DROPPED CLUBS
JULY/AUG/SEPT	0	0	1
OCT/NOV/DEC	0	0	0
JAN/FEB/MAR	0	0	0
APR/MAY/JUNE	1	0	0

Members			
RESULTS FOR 2017-2018			
QUARTER	MEMBER GROWTH NET GOAL	MEMBER GROWTH ACTUAL	DROPPED MEMBERS ACTUAL (including transfers)
JULY/AUG/SEPT	8	12	9
OCT/NOV/DEC	8	6	38
JAN/FEB/MAR	4	17	8
APR/MAY/JUNE	30	0	0

GOALS AND ACTUAL NEW CLUBS CUMULATIVE



GOALS AND ACTUAL MEMBERS CUMULATIVE



DROPPED CLUBS: 1

9 CLUBS OF 31 ADDED 1 OR MORE NEW MEMBERS

GENDER DISTRIBUTION	
MALE	218 (58.13%)
FEMALE	157 (41.87%)
Women Percentage Fiscal Year Goal: 40%	

DROPPED MEMBERS	
DECEASED	1
CLUB CANCELLED	0
OTHER	54
TOTAL	55

[CLICK HERE FOR CUMULATIVE MEMBERSHIP DATA](#)

TOTAL FAMILY UNIT MEMBERS	100
FAMILY MEMBERS PAYING HALF DUES	50